



Support Guide

If you are an Exchange 2007 administrator, follow these simple steps to configure PrimalScript 2009 to recognize the Exchange cmdlets in your PowerShell scripting.

Add Exchange 2007 Support to PrimalScript 2009

Windows administrators who need to write PowerShell scripts that use the Exchange 2007 cmdlets have always found it very difficult to configure PrimalScript so that it will recognize the Exchange 2007 cmdlets. The primary challenge is that the Exchange 2007 management shell is a 64 bit application. PrimalScript being a 32 bit application can't properly access the Exchange 2007 snapin.

However, if you follow these simple steps you can configure PrimalScript 2009 so that it can recognize the Exchange 2007 snapin. Once loaded, this will provide PrimalSense for all the Exchange cmdlets and access to cmdlet help. These steps assume you are using a 32bit client operating system.

Step 1: Download the 32bit version of the Exchange 2007 Management shell from Microsoft:

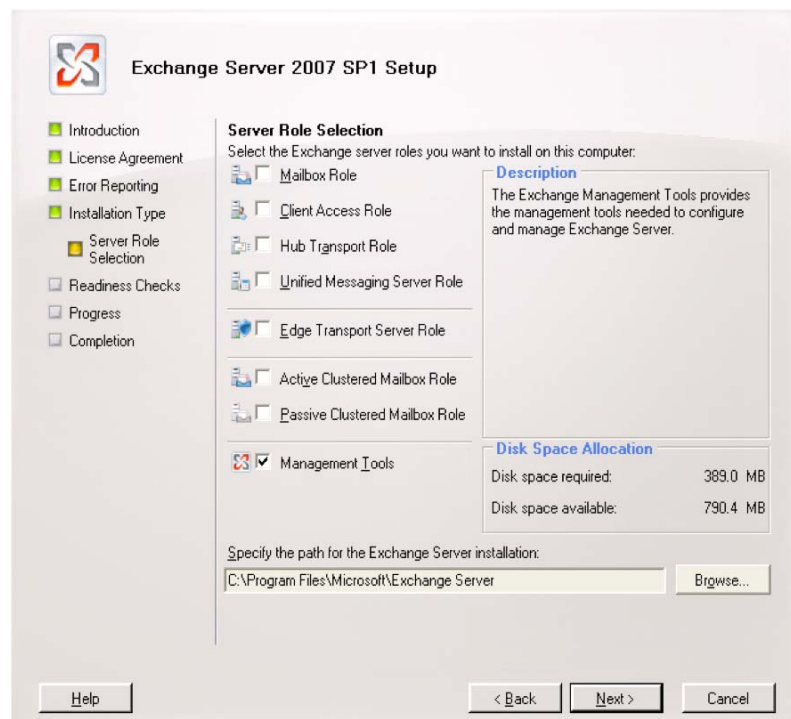
(<http://www.microsoft.com/downloads/details.aspx?FamilyID=6be38633-7248-4532-929b-76e9c677e802&displaylang=en>).

Step 2: You will need a copy of

LDIFDE.EXE in your System32 directory. More than likely you won't have a copy, but you can easily copy it from the System32 directory of any 32bit domain controller. If you have 64 bit domain controllers you can copy the program from the SysWOW64 directory instead.

Step 3: The Exchange 2007 installation requires installation of the IIS Common Files and should be installed on a domain member. Depending on your desktop configuration you may need to add this feature.

Step 4: Install the Exchange 2007 Management package on a supported 32 bit client OS. Select the custom install option and check the box to only install the management tools. Don't forget you'll need to run the installa-





Support Guide

tion with appropriate credentials. Follow instructions to complete the setup wizard.

After installation, test your Exchange setup by opening the management console and running a few Exchange 2007 cmdlets. Install additional updates as necessary.

Step 5: To make PrimalScript 2009 aware of the Exchange cmdlets add the following lines to either your PowerShell or PrimalScript profile. If you don't have one of these profiles, use the Profile Manager in the C:\Program Files\SAPIEN Technologies, Inc\PrimalScript 2009. Create or edit the appropriate profile.

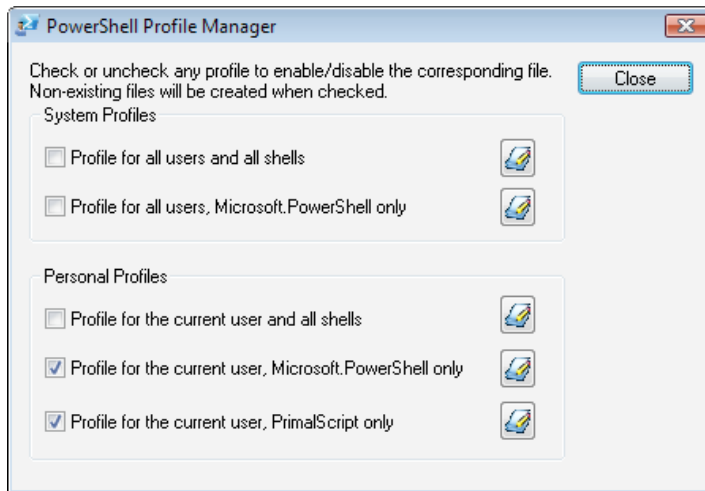
Add these lines to the profile:

```
add-pssnapin Microsoft.Exchange*
. "C:\Program Files\Microsoft\Exchange Server\Bin\Exchange.ps1"
```

If you've changed the installation folder for the Exchange 2007 management tools, modify the path to Exchange.ps1 accordingly. You can also find the path by looking at the shortcut properties to the Exchange Management Shell on your Programs menu.

Pay close attention to lines I've specified. The Exchange.ps1 script is being dot sourced in the profile script so you need to have a period followed by a space and then the complete path to the script. Save the file and open PrimalScript 2009.

Wait until PowerShell has been fully instantiated. You can tell when PowerShell is ready by looking at



the PowerShell icon at the bottom of PrimalScript. When it is completely blue, PrimalScript is ready.

Create a new PowerShell script. Start typing the name of an Exchange 2007 cmdlet like **Get-ExchangeServer**. You should now get PrimalSense for the cmdlet. Select the cmdlet and press F1. You should get full cmdlet help just like you do

with all the other PowerShell cmdlets. If you open the object browser and explore the PowerShell node, you should see the Exchange 2007 cmdlets and snapin.

That's it. Now you can create Exchange 2007 PowerShell scripts with PrimalScript 2009 with full support. You can even run and test your scripts just as you would any other PowerShell script.

If you need help with PowerShell or using the Exchange 2007 management shell, please feel welcome to post in the forums at ScriptingAnswers.com.

Jeffery Hicks

