



Quick Guide

Getting to your tools as efficiently as possible is important. I will show you how you can customize PrimalScript 2009 to group and launch your tools.

Customizing PrimalScript 2009's Tools Browser

PrimalScript 2009 starts a tool scanner when it is launched on a computer for the very first time and fills the tools browser with all the programs it recognizes.

Many users don't realize that the Tools Browser is customizable and expandable. The following will show you how you can manually add and change tool settings as well as add items to the database of recognized programs.

The quickest way to add any tool to the tools browser is to simply drag and drop the executable file or a shortcut to it from Windows Explorer or your desktop. PrimalScript will create a shortcut to that file in the current group and use the first icon it can find in the executable file.

Operating System	Folder
Windows XP	C:\Documents and Settings\ <user>\Application Data\SAPIEN\Tools</user>
Windows Vista	C:\Users\ <user>\AppData\Roaming\SAPIEN\Tools</user>
Windows 7 (RC1)	C:\Users\ <user>\AppData\Roaming\SAPIEN\Tools</user>

Figure 2: Tool settings path

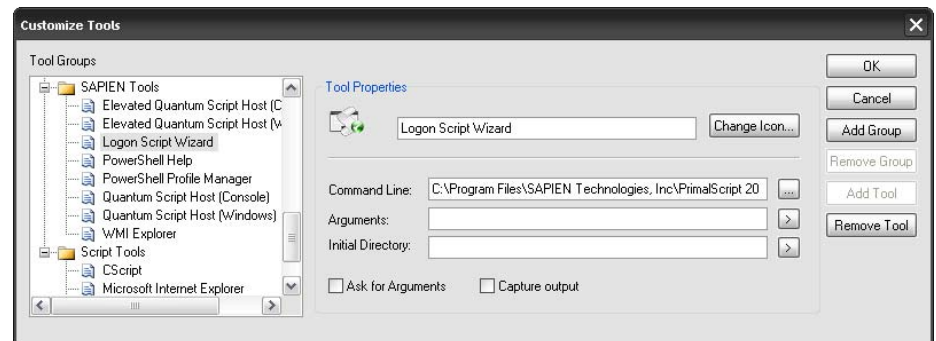


Figure 1: Tool properties dialog

Don't forget that this also works for any document type that can be opened directly. So if you prefer to mix your PDF and Word

groups you need to open the "Customize Tools" dialog.

Right click anywhere within the Tools Browser and select "Customize" to access the dialog shown in Figure 1. This dialog allows you to manage the individual

files with your tools, just drag and drop them onto a group in the browser. You might also consider creating a separate group just for important documents.

groups as well as setting parameters for each individual entry. You can set the icon, the command line arguments and the initial folder in which to start an application. The checkbox "Ask

To create, remove or rename



for arguments” is important for any tool you have that uses a parameter to specify its action. The “Capture output” option allows you to redirect the output of any console application to PrimalScript’s output window.

If you don’t want to use these user interface elements to customize the content of the Tools Browser or if you would like to transfer some or all entries to another computer, you can also ac-

```
<Tool Capture=0 QueryArguments=0 IconIndex=0 Prompt=0
  ExeName="C%3A%5CWINDOWS%5Csystem32%5Csecpol%2Emsc"
  InitDir="" Arguments="" Name="Local+Security+Settings"
  IconFile=""/>
```

Figure 3: Sample XMLConfig file

cess these settings directly on your local hard drive.

PrimalScript stores these settings in the folders shown in Figure 2, depending on the operating system.

Each group in PrimalScript’s Tools Browser is represented by a folder named the same as the group. Each of these folders contains an xmlconfig file for each file in the group. The file name is typically the same name used to display the entry in PrimalScript if the entry was generated by the automated toolscanner. The XML data in the file however is what defines all settings for each tool.

Please refer to Figure 3 as an ex-

ample for the “Local Security Settings” management console snapin.

The XML in that file is really not complicated and straight forward. It is important to note that all values for the ExeName, InitDir, Arguments, Name and IconFile attributes must be URL encoded.

As I mentioned in the beginning, PrimalScript scans your hard drive for tools when it is

launched for the very first time. It uses an XML file to drive the recognition of existing applications and utilities, ToolDetect.xml, which is located in the PrimalScript installation folder.

We do not recommend that you alter or add to this database, but if you have any tools or applications that you would like to see added to the automatically added entries, please log on to <http://support.sapien.com> and leave us a note in the wish list forum.

Alex Riedel

